

# MOREY



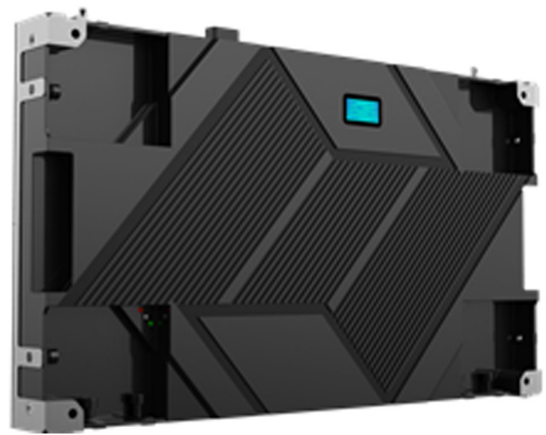
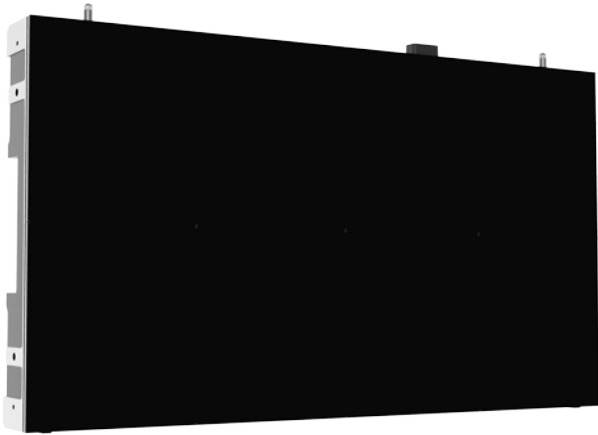
## MOREY FINE PITCH LED DISPLAY

sld mediatec GmbH • Schnieglinger Str. 166 • 90425 Nürnberg  
Tel.: 0911 23 08 5-0 • Fax.: 0911 23 08 5 - 23  
info@sld-mediatec.de • www.sld-mediatec.de



# PARAMETERS

Pixel Pitch	Cabinet Size	Modul Size
P0.9 P1.1 P1.2 P1.4 P1.5 P1.8 P0.9 (smd & miniled)	600 x 337.5 x 60	150 x 168.75

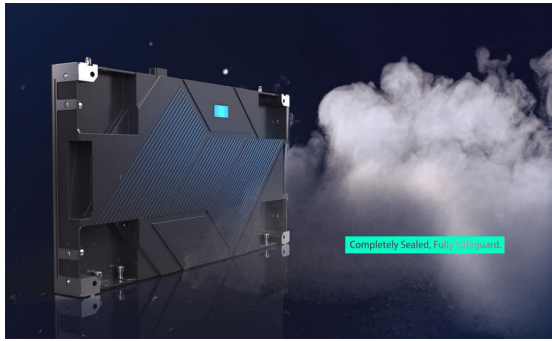


Built-in power snuggles along the aluminum back shell with cooling silicone layer to achieve excellent heat dissipation. Exterior geometrically aesthetic thermal slots can further amplify the cooling area.

## MOREY FINE PITCH LED DISPLAY

sld mediatec GmbH • Schnieglinger Str. 166 • 90425 Nürnberg  
Tel.: 0911 23 08 5-0 • Fax.: 0911 23 08 5 - 23  
info@sld-mediatec.de • www.sld-mediatec.de



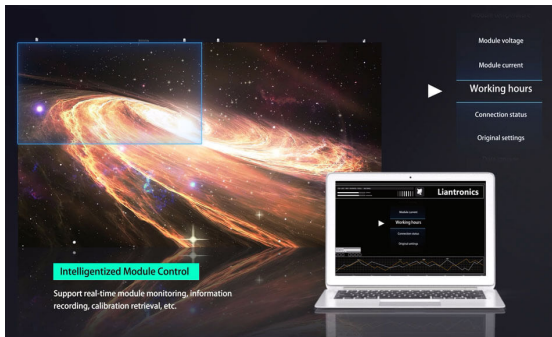
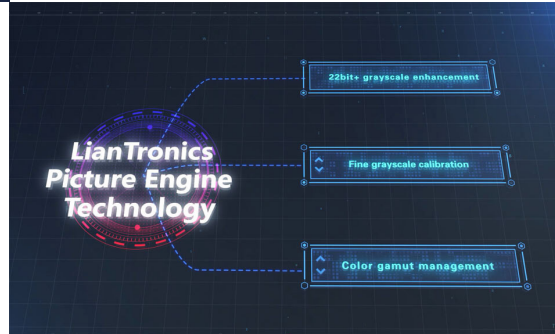


### IP60 Comprehensive Protection

Fully sealed cabinets in IP60 high protection effectively lower down the failures of inside components.

### True-to-life Broadcasting

High contrast ratio & grayscale, NTSC-level color gamut, ultra-high flatness and 160° wide views combine to present enticing images with sharp colors. The latest LianTronics Picture Engine Technology enables to elevate the demonstrated pictures into 22bit+ realistic effect.

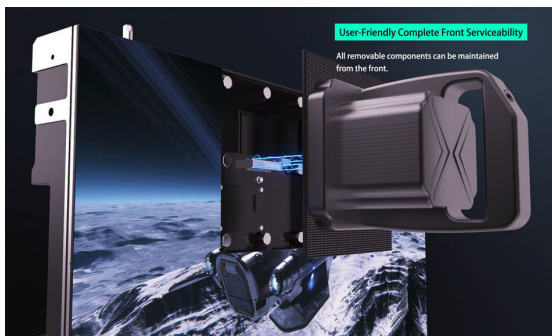
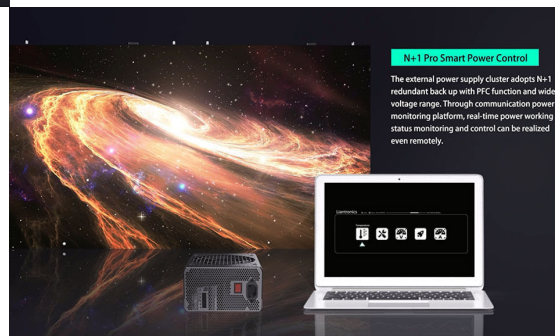


### Intelligentized Module Control

Support real-time monitoring from smart terminals and quality backtracking. Calibration retrieval can be done automatically after module replacement.

### N+1 Pro Smart Power Control

The external power supply cluster adopts N+1 redundant back up with PFC function and wide voltage range. Real-time power working status can be monitored and controlled remotely.



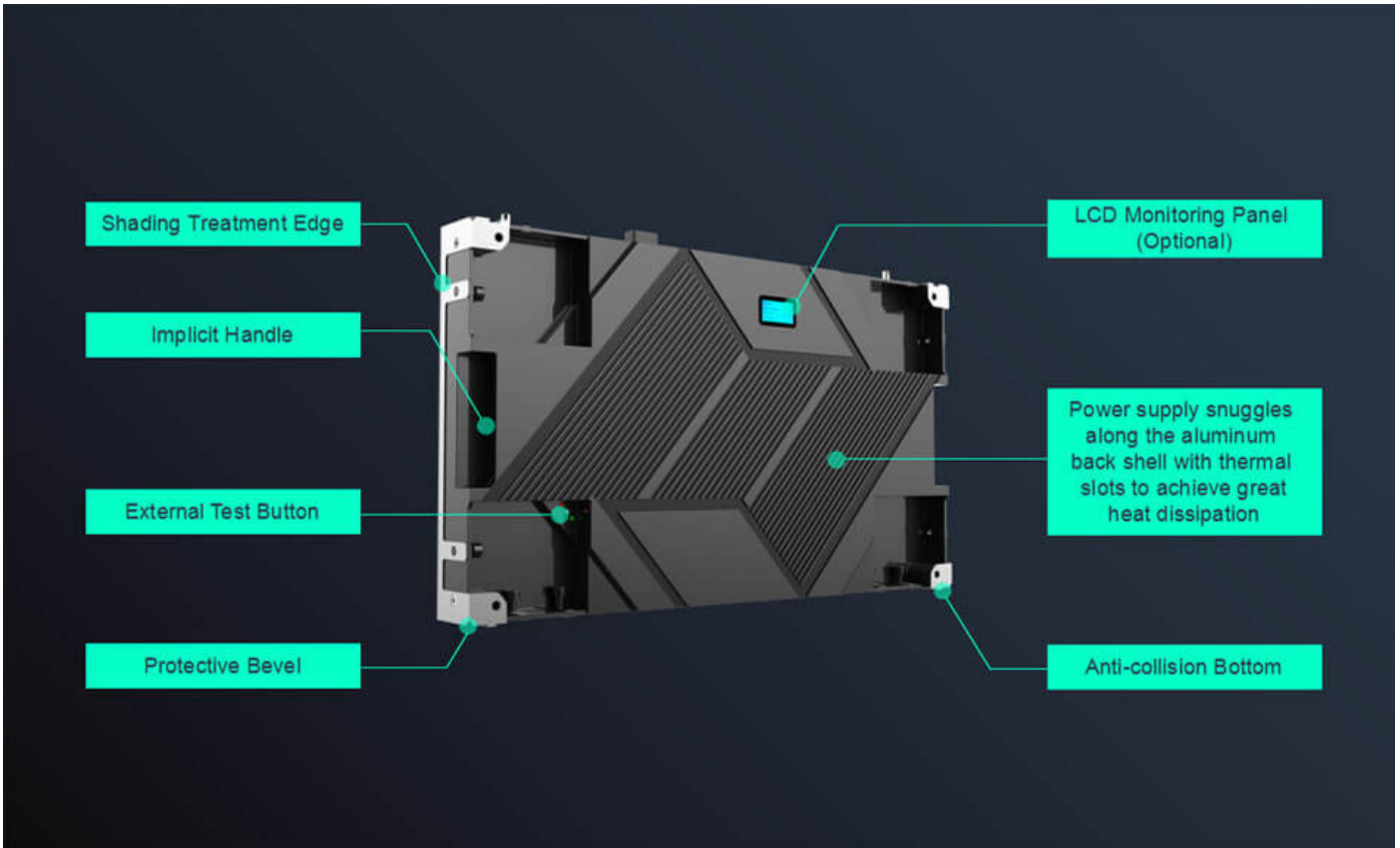
### User-friendly Complete Front Serviceability

All removable components can be maintained from the front. The friendly serviceability gives you higher installation flexibility to meet your needs.

## MOREY FINE PITCH LED DISPLAY

sld mediatec GmbH • Schnieglinger Str. 166 • 90425 Nürnberg  
 Tel.: 0911 23 08 5-0 • Fax.: 0911 23 08 5 - 23  
 info@sld-mediatec.de • www.sld-mediatec.de





### Ergonomic Product Experience

Implicit handles, shading treatment edges, protective bevels, optional monitoring LCD panel, and more ergonomic product details combine to provide you with ultimate experience comfort.

### MOREY FINE PITCH LED DISPLAY

sld mediatec GmbH • Schnieglinger Str. 166 • 90425 Nürnberg  
Tel.: 0911 23 08 5-0 • Fax.: 0911 23 08 5 - 23  
info@sld-mediatec.de • www.sld-mediatec.de

